



# How to Run a Successful Reflections Program

2021 California State PTA



PTA REFLECTIONS



CALIFORNIA STATE PTA REFLECTIONS CHAIR

PRESENTER:

LISA SNOWISS



# WHO YA GONNA CONTACT?

**FIRST – YOUR LOCAL SCHOOL REFLECTIONS  
CHAIRMAN OR SCHOOL PTA PRESIDENT**

**WHEN ALL ELSE FAILS THEN CONTACT**

**CALIFORNIA STATE PTA**

**REFLECTIONS CHAIRMAN**

**REFLECTIONS @CAPTA.ORG**



PTA REFLECTIONS

# REFLECTIONS Most Frequently Asked Questions



Why is Reflections important?

What is the due date?

How is the theme selected?

My students art didn't win, (and it is the BEST), so why?

How are we going to do Reflections this year?

Virtual? Physical? Hybrid?



PTA REFLECTIONS





# ABOUT REFLECTIONS

- **THE NATIONAL PTA REFLECTIONS PROGRAM WAS CREATED IN 1969 AND MORE THAN 10 MILLION STUDENTS HAVE PARTICIPATED.**
- **PTA REFLECTIONS IS A NATIONALLY ACCLAIMED STUDENT RECOGNITION PROGRAM TO ENCOURAGE ARTISTIC CREATIVITY IN THE CLASSROOM AND AT HOME.**
- **PTA REFLECTIONS WELCOMES ALL GRADES AND ABILITIES TO EXPLORE AND BE INVOLVED IN THE ARTS.**







# REFLECTIONS PROMISE

To **help all students** explore their own thoughts, feelings and ideas, develop artistic literacy, increase confidence and **find a love for learning** that will help them become more successful in school and in life.



# The 2021-2022 PTA Reflections Program Theme is:



An annual theme is determined by the  
National PTA Reflections  
**Theme Search Contest.**

This years theme was selected 2 years ago.

The 2021-2022 Reflections theme is  
***I Will Change the World By...***  
submitted by Lydia Keel from  
Spanish Fork Junior High School PTSA in Utah.

Students may enter their theme ideas on the  
California State PTA Reflections website starting on  
September 1<sup>st</sup> and the poll closes on November 1<sup>st</sup>.

The State PTA Reflections committee  
submits 5 themes to represent California at the  
National PTA Reflections theme selection.

**Choose the  
Arts  
Categories  
to offer at  
your school**



Dance Choreography



Film Production



Literature



Music Composition



Photography



Visual Arts



PTA REFLECTIONS





## 5 GRADE DIVISIONS

- DETERMINE WHICH GRADE DIVISIONS APPLY TO YOUR SCHOOL
- SPECIAL ARTIST MAY BE ANY GRADE – AND ARE ALL JUDGED AS IF AT SAME GRADE LEVEL
  - THE STUDENT'S PARENT SHOULD MAKE THE DETERMINATION OF WHETHER THE CHILD SHOULD ENTER IN THE SPECIAL ARTIST CATEGORY

Primary Grades Pre K—2

Intermediate Grades 3—5

Middle School Grades 6—8

High School Grades 9—12

Special Artist All Grades

Choose the  
Grade  
Division(s)  
to offer at  
your school

National  
**PTA**  
everychild, everyvoice.™



PTA REFLECTIONS

# HARD WAY? OR EASY WAY?



**ALL OF THE REFLECTIONS MATERIALS -**

**STUDENT ENTRY PACKET**

**CATEGORY GUIDELINES**

**PROMOTION GRAPHICS**

**→ LOCAL LEADERS GUIDE ←**

**ARE ALL ON THE CALIFORNIA STATE PTA REFLECTIONS PAGE!**

**[CAPTA.ORG/REFLECTIONS](http://CAPTA.ORG/REFLECTIONS)**





# IGNITE YOUR PROGRAM

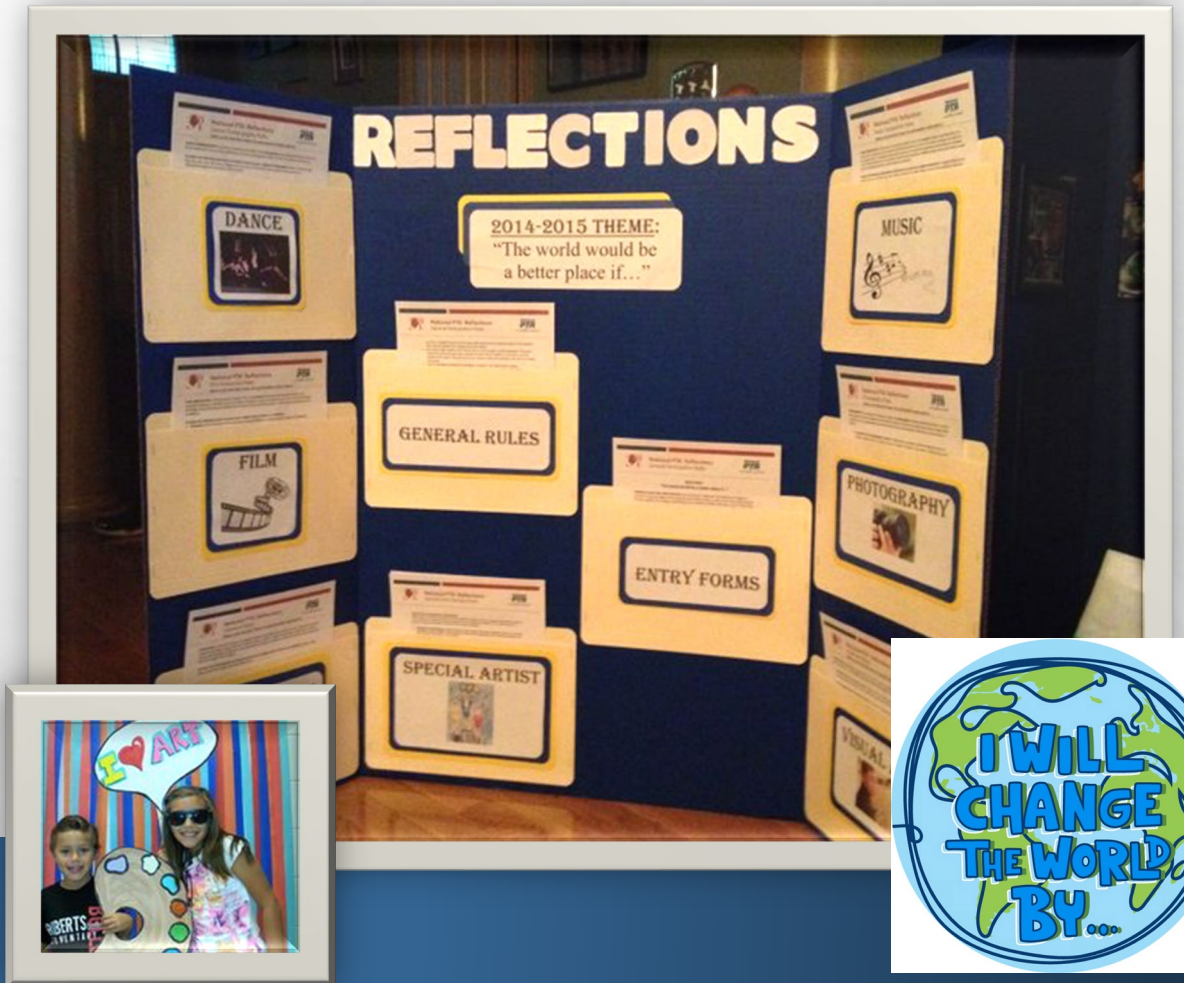
1. GETTING STARTED
2. PROMOTE REFLECTIONS
3. REVIEW SUBMISSIONS
4. CELEBRATE AND RECOGNIZE PARTICIPANTS
5. WRAP UP AND EVALUATE





# PROPOSE THE PROGRAM TO YOUR SCHOOL

- ASK PTA BOARD
- CREATE A BUDGET
- ASK PRINCIPAL FOR PERMISSION AND ADMINISTRATION SUPPORT
- GET TEACHER INVOLVEMENT BY WORKING THE THEME INTO CLASSROOM CURRICULUM (IE: SOCIAL STUDIES DISCUSSION, LITERATURE, ART)



# SUGGESTED DUE DATES

## ASK YOUR PTA REFLECTIONS CHAIRMAN OR YOUR PTA PRESIDENT

- STUDENT DUE DATE  
OCTOBER 15<sup>TH</sup> (SUGGESTED)
- COUNCIL DUE DATE  
NOVEMBER 1<sup>ST</sup> (SUGGESTED)
- DISTRICT DUE DATE  
DECEMBER 1<sup>ST</sup> (SUGGESTED)
- STATE DUE DATE  
JANUARY 12, 2022 (FIXED)

\*\* PLAN FOR 2-3 WEEKS BEFORE DUE DATES  
FOR REVIEWING OF EACH  
GROUP TO SEND TO COUNCIL/DISTRICT





# ORGANIZE AND PLAN AND EFFECTIVE PROGRAM

- PTA LEADER CHECKLIST—CUSTOMIZABLE
- RECRUIT A COMMITTEE & VOLUNTEERS
- RECRUIT COMMUNITY ARTS PROFESSIONALS (AS VOLUNTEERS AND/OR REVIEWERS)
- READ LOCAL LEADERS GUIDE AND GUIDELINES.
- READ THE GUIDELINES AGAIN!

## Step 1. Start the Arts

- Register your PTA at [PTA.org/Reflections](http://PTA.org/Reflections).
- Confirm that your local PTA is in good standing with the state PTA and eligible to participate.
- Make sure the Reflections program is included in your PTA's program budget for the school year.
- Visit your state PTA website for program registration information and materials.

## Step 2. Organize and Plan Your Program

- Recruit your committee/volunteers and engage school personnel and community members for additional support.
- Recruit creative professionals to judge student artwork.
- Determine which arts categories and grade divisions your PTA will offer. New program leaders may consider getting started with one or more arts category and division.
- Establish a timeline for the following activities.

## Step 3. Promote Reflections

- Distribute program rules and student entry form.
- Promote artwork submission deadline and instructions.

## Step 4. Organize Artwork for Judging

- Collect and organize artwork by category and division. Check entries for qualification.
- Facilitate judging and support judges as needed.
- Collect judges' scores and rank entries. Assign awards and prepare artwork for exhibition.

## Step 5. Celebrate and Recognize Your Participants

- Announce awardees to the whole school community.
- Host a Reflections Celebration Event to showcase student work and distribute certificates/awards.
- Offer state and national opportunities for student recognition by sending your finalists to the next judging round. See *State PTA's Leader Guide* for details.

## Step 6. Wrap Up





REGISTRATION IS  
OPTIONAL  
BUT ENCOURAGED

PTA.ORG/REFLECTIONS

SCROLL DOWN TO:  
“REGISTER HERE”

#### Step 1. Start the Arts

- Register your PTA at [PTA.org/Reflections](https://pta.org/reflections).
- Confirm that your local PTA is in good standing with the state PTA and eligible to participate.
- Make sure the Reflections program is included in your PTA's program budget for the school year.
- Visit your state PTA website for program registration information and materials.

#### Step 2. Organize and Plan Your Program

- Recruit your committee/volunteers and engage school personnel and community members for additional support.
- Recruit creative professionals to judge student artwork.
- Determine which arts categories and grade divisions your PTA will offer. New program leaders may consider getting started with one or more arts category and division.
- Establish a timeline for the following activities.

#### Step 3. Promote Reflections

- Distribute program rules and student entry form.
- Promote artwork submission deadline and instructions.

#### Step 4. Organize Artwork for Judging

- Collect and organize artwork by category and division. Check entries for qualification.
- Facilitate judging and support judges as needed.
- Collect judges' scores and rank entries. Assign awards and prepare artwork for exhibition.

#### Step 5. Celebrate and Recognize Your Participants

- Announce awardees to the whole school community.
- Host a Reflections Celebration Event to showcase student work and distribute certificates/awards.
- Offer state and national opportunities for student recognition by sending your finalists to the next judging round. See *State PTA's Leader Guide* for details.

#### Step 6. Wrap Up







# PROMOTE REFLECTIONS

**CREATIVE WORKSHOP**  
Let's inspire imagination together!

A complimentary after school creative workshop offered to our LWBE 2nd-5th grade students!

**"Let Your Imagination FLY"**

**2nd & 3rd Graders**  
Thursday, Sept. 24th  
LWBE Quest Room OP  
2:50pm to 4:50pm  
(Mrs. Scott's room)

**4th & 5th Graders**  
Thursday, Oct. 1st  
LWBE Quest Room OP  
2:50pm to 4:50pm  
(Mrs. Scott's room)

**SIGN UPS begin Friday, September 11th @ 8:00am**  
please visit The Reflections tab  
<http://lwbe.my-pta.org>

Maximum **25** students per session. Space available on first serve basis. **Registration SIGN UP on the website!**  
questions? contact us! lwbe.reflections.2015@



**EXPLORE the Arts!**  
**PARTICIPATE in PTA Reflections**







**Summary of Rules for Participation**

Students must participate through a local PTA/PTA in good standing and may enter in one or more art categories. Only new pieces of artwork inspired by the theme may be submitted. Each entry must be the original work of one student only. Only one student may be recognized as the award recipient for each entry. Other individuals may appear in or perform a student's work, but the work itself must be the creative product of one student. Use of copyrighted material is prohibited, except for background music in dance choreography and film production entries when cited. Entries will be judged on how well the student uses his or her artistic vision to portray the theme, originality and creativity.

- Dance Choreography.** Accepted styles include solo/ensemble include: ballet, contemporary, ethnic and folk, hip hop, jazz and tap. Choreographer may be the performer, or one of the performers, but does not have to be. Video recording must not exceed 5 minutes and must be less than 1GB (one gigabyte) in file size. Accepted file formats include: AVI, QuickTime (.mov), MPEG (.mpeg, .mp4), Windows Media (.wmv), and Flash Video (.flv, .swf).
- Film Production.** Accepted forms include: Animation, narrative, documentary, experimental, or a media presentation (PowerPoint is prohibited). Entries must be the director, screenwriter, and camera person including all storyboarding and editing. Video recording must not exceed 3 minutes and must be less than 1GB (one gigabyte) in file size. Accepted file formats include: AVI, QuickTime (.mov), MPEG (.mpeg, .mp4), Windows Media (.wmv), and Flash Video (.flv, .swf).
- Literature.** Accepted forms of fiction and nonfiction include: Prose, poetry, drama (screen play and play script), reflective essay, narrative, and short story. Entry must not exceed 2,000 words and must be handwritten or typed; one side only. Students for whom English is not their first language may submit literature entries in their own language. An interpretive translation in English must accompany the entry. Accepted formats include: Single-sided print on 8 1/2 x 11 paper, or PDF (.pdf) file format.
- Music Composition.** All instruments, sounds, styles and combinations are accepted. Copyrighted material is prohibited. The composer may be the performer, or one of the performers, but does not have to be a performer. Notation, score or tablature is required for middle and high school division. Audio recording must not exceed 5 minutes. Accepted file formats include: MP3, MPA, WMA, WAV, AAC (M4A) and FLAC formats. Music videos are not accepted.
- Photography.** Accepted forms of photography include: A single photo, panoramic, photo-montage (one seamless print of multiple original photos), a multiple exposure, negative, sandwich or photogram. Original black-and-white and color images are accepted. Entries must be the one to take the photograph. Must be mounted or matted on cardboard, poster board, or other sturdy material. Accepted formats include: Matted print, or high resolution digital photo (.jpg, .gif, .png, .bmp).
- Visual Arts.** Accepted forms include: Architecture (2D/3D), carpentry, ceramics, collage, photographic collage (multiple photos cut/pasted), computer-generated image, crafts, design, diorama, drawing, fiber work, jewelry, kilns, metal etching/etch work, mosaics, painting, printmaking, sculpture and wood carving. Framed entries not accepted. Paper entries must be mounted on sturdy material and 3D works must include packaging materials and a high resolution photo of the entry for judging and ID purposes.

Submit Student Entry Form & Artwork to: \_\_\_\_\_  
 Deadline for Entry: \_\_\_\_\_

**National PTA' Reflections**  
Student Entry Form

---

To be completed by PTA before distribution:

PTA LEADER NAME \_\_\_\_\_ PHONE \_\_\_\_\_

EMAIL \_\_\_\_\_

LOCAL PTA NAME \_\_\_\_\_

NATIONAL 8-DIGIT ID # \_\_\_\_\_ STATE ID # \_\_\_\_\_

COUNCIL PTA \_\_\_\_\_ DISTRICT PTA \_\_\_\_\_

REGION PTA \_\_\_\_\_ STATE PTA \_\_\_\_\_

MEMBER DUES PAID DATE \_\_\_\_\_ INCLUSION PAID DATE \_\_\_\_\_ SPECIAL AFFILIATION DATE \_\_\_\_\_

*Register at PTA.org/Reflections*

DEADLINE FOR ENTRY: \_\_\_\_\_

TEACHER/ROOM # \_\_\_\_\_

---

STUDENT NAME \_\_\_\_\_ GRADE \_\_\_\_\_ AGE \_\_\_\_\_ M/F \_\_\_\_\_

PARENT/GUARDIAN NAME \_\_\_\_\_ EMAIL \_\_\_\_\_ PHONE \_\_\_\_\_

MAILING ADDRESS \_\_\_\_\_ CITY \_\_\_\_\_ STATE \_\_\_\_\_ ZIP \_\_\_\_\_

Ownership in any submission shall remain the property of the entrant, but entry into this program constitutes entrant's irrevocable permission and consent that PTA may display, copy, reproduce, enhance, print, sublicense, publish, distribute and create derivative works for PTA purposes. PTA is not responsible for lost or damaged entries. Submission of entry into the PTA Reflections program constitutes acceptance of all rules and conditions. I agree to the above statement and the National PTA Reflections Official Rules.

STUDENT SIGNATURE: \_\_\_\_\_ PARENT/LEGAL GUARDIAN SIGNATURE: \_\_\_\_\_

---

GRADE DIVISION (Check One)

PRIMARY (Pre-school-Grade 2)  HIGH SCHOOL (Grades 9-12)

INTERMEDIATE (Grades 3-8)  SPECIAL ARTIST (All Grades)

MIDDLE SCHOOL (Grades 6-8)

ARTS CATEGORY (Check One)

DANCE/CHOREOGRAPHY  MUSIC COMPOSITION

FILM PRODUCTION  PHOTOGRAPHY

LITERATURE  VISUAL ARTS

---

TITLE OF ARTWORK \_\_\_\_\_

ARTWORK DETAILS (Dance/Film: cite background music; Music: multi-act(s)/instrumentation; Literature: word count; Photo/Visual Arts: materials & dimensions)

ARTIST STATEMENT (Must be 50 to 100 words describing your work and how it relates to the theme)

\_\_\_\_\_

\_\_\_\_\_

\_\_\_\_\_

# ADMINISTER THE PROGRAM







LOOK CLOSELY!

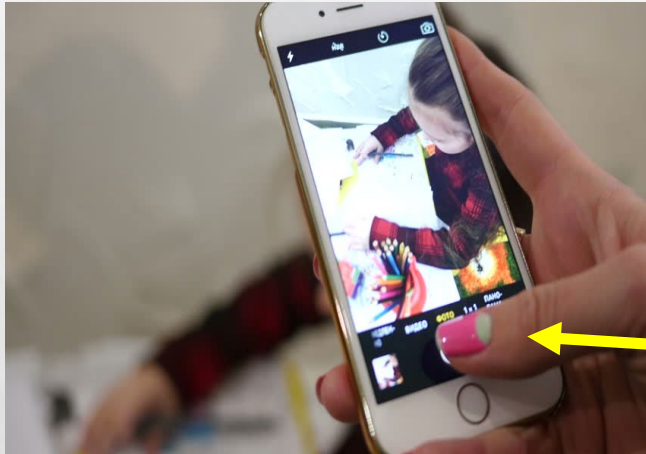


PTA REFLECTIONS



# PHOTOGRAPHY

A



Mom's  
Hand

B



**Which one can be submitted?**



# PHOTOGRAPHY OR ANY CATEGORY



A



B



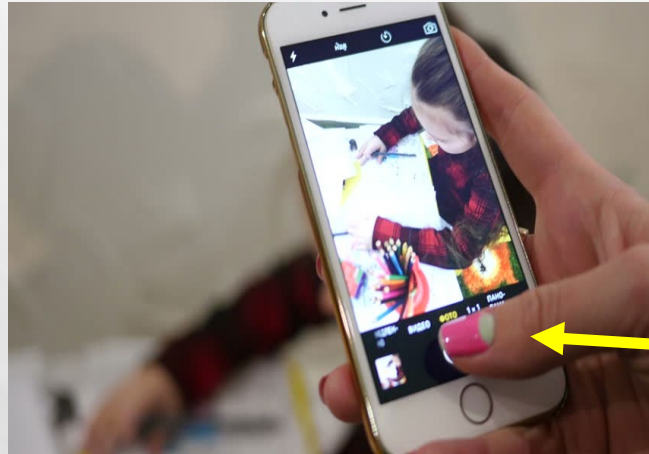
Which one can be submitted?





# FILM PRODUCTION

A



Mom's  
Hand

B



Which one can be submitted?



# MUSIC COMPOSITION OR ANY CATEGORY



A



B



Which one can be submitted?



# MUSIC COMPOSITION

## MIDDLE AND HIGH SCHOOL DIVISIONS



# A

MUSIC NOTATION



# B

WRITTEN REFLECTIVE STATEMENT  
THAT PROVIDES A MUSICALLY  
TECHNICAL EXPLANATION



What must be submitted?  
A or B or Both or Either





# A Reflective Statement would address questions such as the following:

- WHAT CREATIVE AND MUSICAL DECISIONS DID THE STUDENT MAKE TO ACHIEVE THE FINAL VERSION OF THE PIECE?
- HOW WERE THE MUSICAL ELEMENTS DEVELOPED?
- WHAT EQUIPMENT WAS USED (IF ANY)?
- WHAT SOUNDS AND/OR MUSICAL IDEAS WERE USED TO REPRESENT CERTAIN IDEAS OR EMOTIONS?
- HOW WERE THE STUDENT'S CREATIVE AND MUSICAL DECISIONS INFLUENCED BY THEIR EXPERTISE, CONTEXT, AND EXPRESSIVE INTENT?





# LITERATURE

## A



## B



Which one can be submitted?





# VISUAL ARTS

A



B



Which one can be submitted?



# VISUAL ARTS OR PHOTOGRAPHY?



What art category is this?





# DANCE CHOREOGRAPHY AND FILM PRODUCTION

A

MP4

B

MOV

C

AVI



Which one can be submitted?  
A only, B only, C only or Any







# KNOW THE GUIDELINES



- **STUDENT ENTRY FORMS** must be **FILLED OUT COMPLETELY**, **HAVE A TITLE** and **REQUIRE AN ARTIST STATEMENT!**
- Students may submit entries in more than one art category and more than one entry in a single art category – but this is up to the school
- Artwork **MUST BE ORIGINAL** and created for the purpose of this program and this year's theme
- Only **ONE STUDENT** may create the work and be recognized as the award recipient, but other students may appear in the artwork itself
- **GENERAL PARTICIPATION, SPECIFIC ARTS CATEGORY AND SPECIAL ARTIST DIVISION GUIDELINES MUST BE FOLLOWED!**
- Students should use the **ARTIST STATEMENT** to express how their submission relates to the theme.



# ORGANIZE ARTWORK FOR REVIEWING

1. CHECK-IN ENTRIES
2. REVIEW ARTWORK & ENTRY FORMS FOR QUALIFICATION
3. SORT BY CATEGORY & AGE DIVISION
4. PREPARE SCORECARDS
5. ASSIGN ENTRIES TO REVIEWERS

## AWARD LEVELS

Award of Excellence, Award of Merit,  
Honorable Mention & Participation

# REVIEWING RUBRIC

<b>Interpretation of Theme</b>	How closely the artwork communicates the theme, based on the artwork itself and the artist statement	<b>40 pts</b>
<b>Artistic Merit/ Creativity</b>	How creative and original the artwork is in its conception of the theme and its presentation	<b>30 pts</b>
<b>Mastery of Medium</b>	The level of skill demonstrated in the basic principles/techniques of the artistic discipline	<b>30 pts</b>





# REVIEWING ENTRIES

- Chairs should not be a reviewer!
- **BLIND JUDGING** is required!
- Reviewers should focus on
  - A well-developed concept rather than technique
  - How the student uses artistic vision to portray theme
- Judges must see the artist's statement to make their decision



# COMMON REASONS FOR INELIGIBILITY



- Local PTA is not in good standing with the State PTA
- Submission prepared by more than one student
- Submission prepared by other than the student
- Submission entered in wrong category
- Submission entered in wrong division

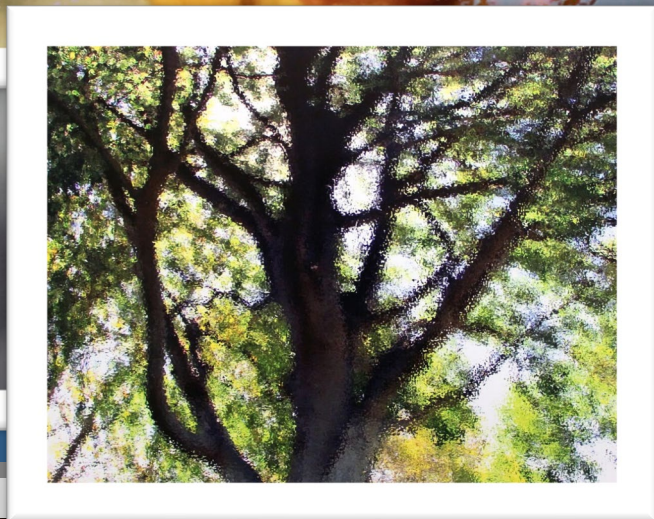
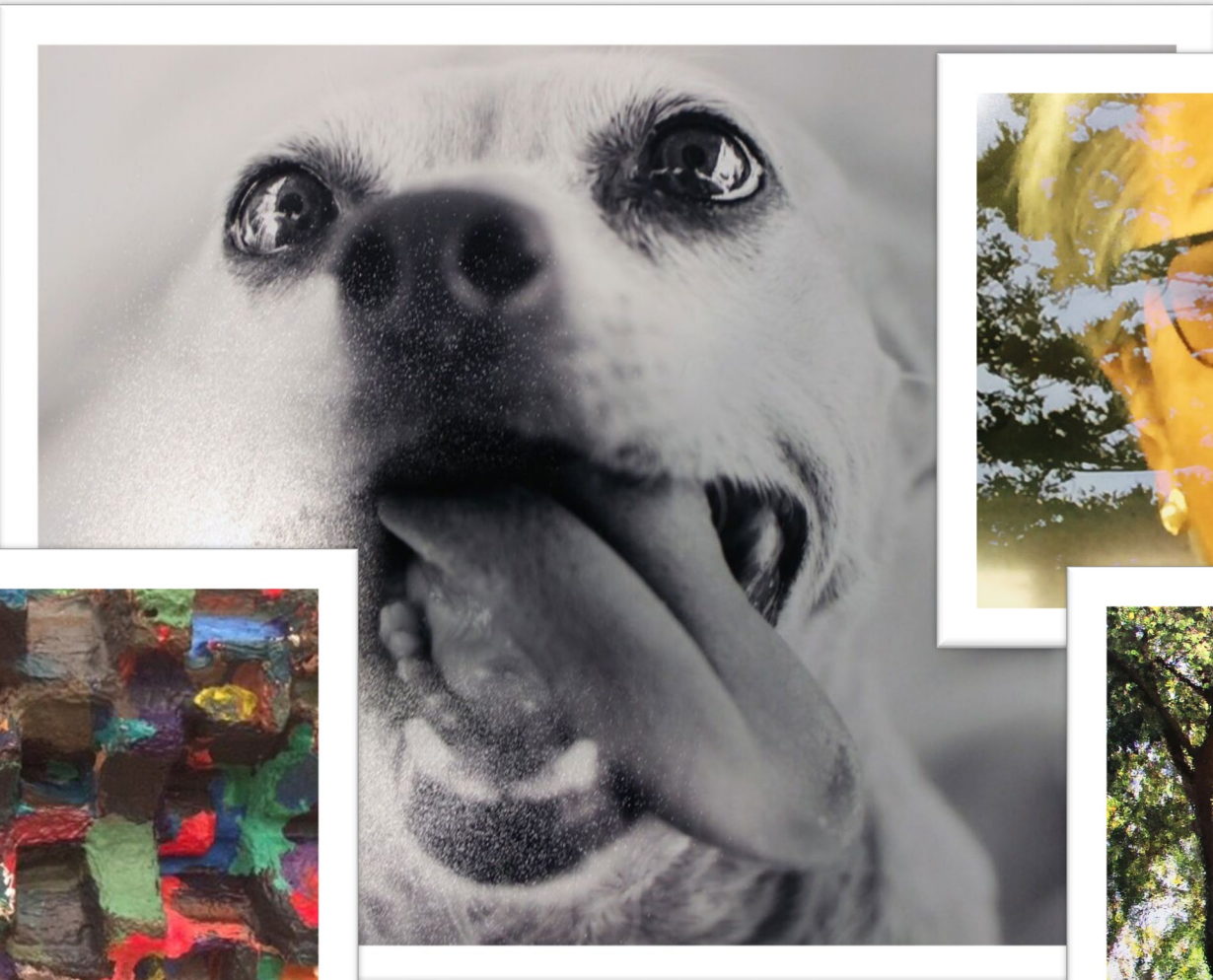
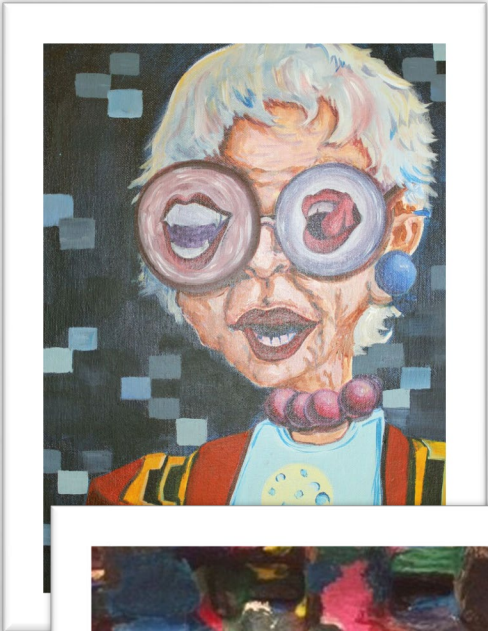


PTA REFLECTIONS





# UNLEASH & INSPIRE STUDENT'S ARTISTIC TALENTS



PTA REFLECTIONS





# CELEBRATE AND RECOGNIZE ALL PARTICIPANTS

- DOUBLE CHECK SPELLING OF NAMES.
- PLAN A REFLECTIONS CELEBRATION EVENT.
- SHARE EVENT WITH MEDIA AND ALL FAMILIES AT YOUR SCHOOL, NOT JUST PARTICIPANTS.
- PRESENT CERTIFICATE OF PARTICIPATION AND OTHER AWARDS. AVAILABLE AT THE PTA STORE.







# AWARDS



- **AWARD OF EXCELLENCE (1ST PLACE)**
  - THE VERY BEST ENTRIES, FULFILLS ALL 3 CRITERIA
  - ADVANCES TO NEXT JUDGING LEVEL.
- **AWARD OF MERIT (2ND PLACE)**
- **HONORABLE MENTION (3RD PLACE)**
- **PARTICIPATION AWARD**

**BE SURE TO RECOGNIZE ALL STUDENTS FOR THEIR EFFORT AND CREATION!**



PTA REFLECTIONS

# HOW MANY AWARDS MAY BE GIVEN OUT?

**THE NUMBER OF AWARDS YOU DECIDE TO GIVE OUT IS UP TO EACH SPECIFIC PTA.**

**TYPICALLY, ONLY THE TOP SCORED PIECE FROM EACH ARTS CATEGORY AND AGE DIVISION ADVANCES TO THE NEXT LEVEL - YOUR COUNCIL/DISTRICT – CHECK WITH THEM TO VERIFY.**



# PREPARING ENTRIES FOR THE NEXT LEVEL - SCHOOLS

- Check all paperwork carefully!
- Check that entry forms are complete and legible.
- Check that entries have a title and artist's statement. These are requirements!
- Do you have copies of everything advancing to the next level?
- Were the entries carefully handled?
- An artist portfolio is strongly recommended for transport!






# WRAP UP AND EVALUATE

## SUBMIT LOCAL PTA UNIT PARTICIPATION FORM WITH ADVANCING ART TO COUNCIL/DISTRICT

- SEND THANK YOU NOTES TO SCHOOL STAFF, COMMUNITY PARTNERS, PTA VOLUNTEERS AND JUDGES.
- FINISH PROGRAM EVALUATION.
- RETURN NON-ADVANCING WORK TO ARTISTS.
- CREATE NOTES/INFORMATION FOR NEXT COMMITTEE MEMBERS.



 **National PTA<sup>®</sup> Reflections**  
California State PTA Local PTA Unit Participation Form by child, for voice.™

OFFICIAL PTA COUNCIL NAME: \_\_\_\_\_ PTA DISTRICT #: \_\_\_\_\_ STATE: CALIFORNIA  
OFFICIAL PTA/PTSA NAME: \_\_\_\_\_ NATIONAL 8-DIGIT ID NUMBER: \_\_\_\_\_  
REFLECTIONS CHAIR NAME: \_\_\_\_\_ PHONE: \_\_\_\_\_ EMAIL: \_\_\_\_\_  
CITY: \_\_\_\_\_ STATE: \_\_\_\_\_ ZIP: \_\_\_\_\_  
TOTAL SCHOOL ENROLLMENT: \_\_\_\_\_

CHECK ALL DIVISIONS THAT YOUR PTA/PTSA REFLECTIONS PROGRAM OFFERED:  
\_\_\_ Primary (Grades PE-2) \_\_\_ Intermediate (Grades 3-5) \_\_\_ Middle School (Grades 6-8) \_\_\_ High School \_\_\_ Special Artist (All Grades)

By division, how many entries did your PTA receive in each arts category?

	Dance Choreography	Film Production	Literature	Music Composition	Photography	Visual Arts	Total
Primary							
Intermediate							
Middle School							
High School							
Special Artist							
Total							

GRAND TOTAL NUMBER OF ENTRIES RECEIVED: \_\_\_\_\_

By division, how many entries did your PTA advance to the next judging round in each arts category?

	Dance Choreography	Film Production	Literature	Music Composition	Photography	Visual Arts	Total
Primary							
Intermediate							
Middle School							
High School							
Special Artist							
Total							

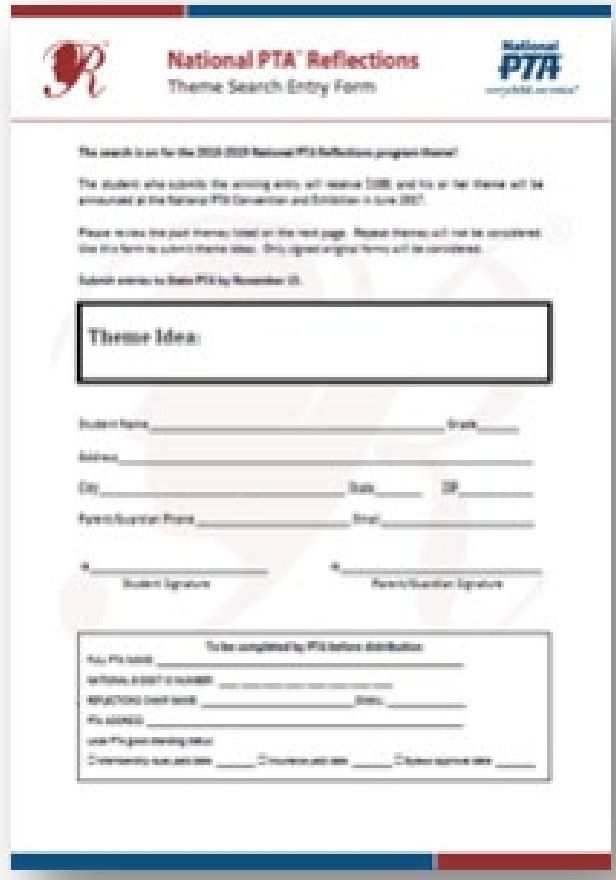
GRAND TOTAL NUMBER OF ENTRIES ADVANCED: \_\_\_\_\_





# THEME SEARCH

OPENS ON SEPTEMBER 1<sup>ST</sup> AND CLOSES ON NOVEMBER 1, 2021 TO CAPTA



**National PTA Reflections**  
Theme Search Entry Form

The search is on for the 2021-2022 National PTA Reflections program theme!

The student who submits the winning entry will receive \$200 and his or her theme will be presented at the National PTA Convention and Exhibition in June 2022.

Please write the past theme listed on the next page. Repeat themes will not be considered. Use this form to submit theme ideas. Only signed original forms will be considered.

Submit entries to State PTA by November 20.

Theme Idea: \_\_\_\_\_

Student Name: \_\_\_\_\_ Grade: \_\_\_\_\_  
Address: \_\_\_\_\_  
City: \_\_\_\_\_ State: \_\_\_\_\_ ZIP: \_\_\_\_\_  
Parent/Guardian Phone: \_\_\_\_\_ Email: \_\_\_\_\_

Student Signature: \_\_\_\_\_ Parent/Guardian Signature: \_\_\_\_\_

To be completed by PTA before distribution:  
New PTA Name: \_\_\_\_\_  
New PTA Address: \_\_\_\_\_  
New PTA City: \_\_\_\_\_ State: \_\_\_\_\_ ZIP: \_\_\_\_\_  
New PTA Phone: \_\_\_\_\_  
New PTA Email: \_\_\_\_\_  
Comments: \_\_\_\_\_



Or enter online:  
<http://capta.org/programs-events/reflections/theme-search/>

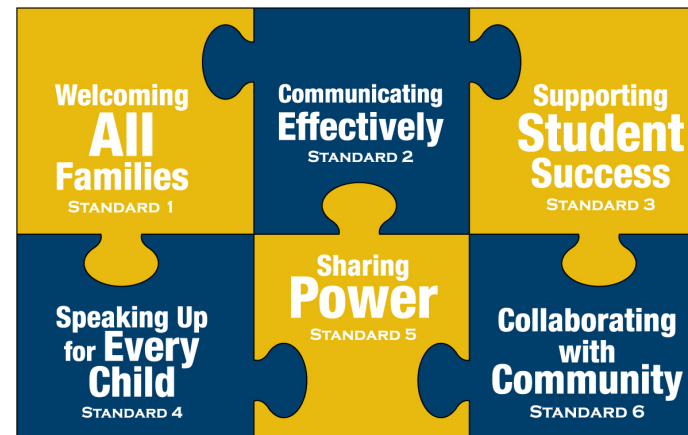


# REFLECTIONS = FAMILY ENGAGEMENT

THE ARTS—AND THE NATIONAL PTA REFLECTIONS PROGRAM—SUPPORT STUDENT SUCCESS AND SERVE AS A VALUABLE TOOL FOR BUILDING STRONG PARTNERSHIPS IN YOUR SCHOOL COMMUNITY. CELEBRATE ARTS LEARNING IN YOUR SCHOOL COMMUNITY WITH REFLECTIONS.

- STUDENTS WITH INVOLVED PARENTS ARE MORE LIKELY TO:
  - HAVE BETTER SOCIAL SKILLS
  - PASS THEIR CLASSES
  - ATTEND SCHOOL REGULARLY
  - EARN HIGHER GRADES AND TEST SCORES
  - GRADUATE AND GO ON TO POSTSECONDARY EDUCATION

## National Standards for Family-School Partnerships



[PTA.org/excellence](https://www.pta.org/excellence)







# QUESTIONS

THANK YOU FOR COMING TO THIS WORKSHOP AND GETTING EXCITED ABOUT REFLECTIONS 2021-2022. WE HOPE THAT YOU WILL BE INSPIRED TO START A PROGRAM AT YOUR SCHOOL OR CONTINUE TO BUILD YOUR PROGRAM!





# WHO YA GONNA CONTACT?

**FIRST – YOUR LOCAL SCHOOL REFLECTIONS  
CHAIRMAN OR SCHOOL PTA PRESIDENT**

**WHEN ALL ELSE FAILS THEN CONTACT**

**CALIFORNIA STATE PTA**

**REFLECTIONS CHAIRMAN**

**REFLECTIONS @CAPTA.ORG**

